

# SUSPENSION SYSTEM

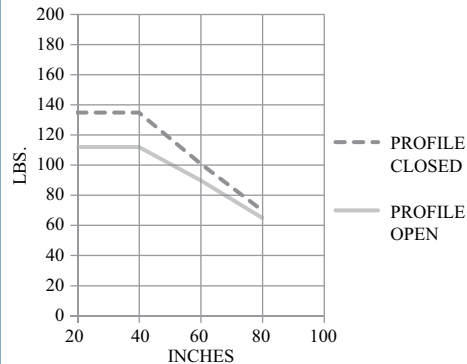
Product Code C3

Catalog No.	Description	Height	Width	Depth	Load Capacity
<a href="#">SCE-SA45IA</a>	Inclining Adapter 45 deg	4.33	9.29	6.38	
<a href="#">SCE-SA320AC</a>	Angle Coupling, 320 Swivel	5.89	5.08	5.08	
<a href="#">SCE-SAFC</a>	Fixed Coupling	1.85	5.08	5.08	
<a href="#">SCE-SA360C</a>	Coupling, 360 Swivel	4.00	6.00	6.00	
<a href="#">SCE-SATFS</a>	Turnable Foot Stand, 360 Swivel	1.34	5.75	5.75	
<a href="#">SCE-SAFFS</a>	Floor Stand Fixed	1.93	7.68	5.71	
<a href="#">SCE-SAMM</a>	Monitor Mounting Bracket	5.50	5.50	5.50	
<a href="#">SCE-SA90A</a>	Angle 90 deg	6.00	6.00	4.00	
<a href="#">SCE-SA230WH</a>	Wall Hinge, 230 Swivel	9.94	5.43	6.83	
<a href="#">SCE-SA310IJ</a>	Intermediate Joint, 310 Swivel	11.46	5.35	6.34	
<a href="#">SCE-SA310JD</a>	Intermediate Joint, 310 Swivel Down Drop	11.46	5.35	6.34	
<a href="#">SCE-SA310TMJ</a>	Top-Mounted Joint, 310 Swivel	7.17	5.71	7.68	
<a href="#">SCE-SACB11T31</a>	Counter Balance Arm	4.74	3.74	27.28	11-31 lbs
<a href="#">SCE-SACB31T55</a>	Counter Balance Arm	4.74	3.74	27.28	31-55 lbs
<a href="#">SCE-SA79TC</a>	Closed Tube Suspension Profile	78.74	2.56	3.54	
<a href="#">SCE-SA39TC</a>	Closed Tube Suspension Profile	39.37	2.56	3.54	
<a href="#">SCE-SA20TC</a>	Closed Tube Suspension Profile	19.69	2.56	3.54	
<a href="#">SCE-SA08TC</a>	Closed Tube Suspension Profile	7.87	2.56	3.54	
<a href="#">SCE-SA30TC</a>	Closed Tube Suspension Profile	29.53	2.56	3.54	
<a href="#">SCE-SA79T</a>	Open Tube Suspension Profile	78.74	2.56	3.54	
<a href="#">SCE-SA39T</a>	Open Tube Suspension Profile	39.37	2.56	3.54	
<a href="#">SCE-SA20T</a>	Open Tube Suspension Profile	19.69	2.56	3.54	
<a href="#">SCE-SAMM</a>	Monitor Mounting Bracket (RAL 9011 Black)	5.50	5.50	5.33	

\*Suspension Systems parts cannot be custom painted\*

## LOAD DIAGRAMS

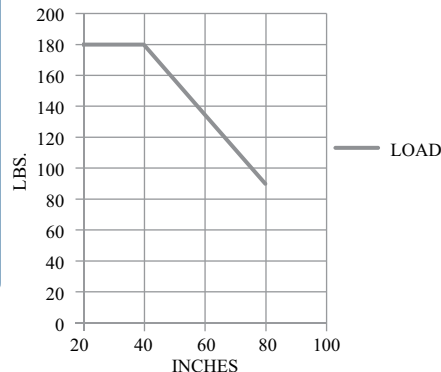
### WITH INTERMEDIATE JOINT



### With Intermediate Joint - Max. Tube Length:

- Profile Closed:**
- 60" distance between wall hinge, top mounted joint and intermediate joint - or -
  - 60" distance between angle and intermediate joint
  - Complete length max. 80"
- Profile Open:**
- 40" distance between wall hinge, top mounted joint and intermediate joint - or -
  - 40" distance between angle and intermediate joint
  - Complete length max. 80"

### WITHOUT INTERMEDIATE JOINT



## Application

Designed for use with the SCE HMI enclosures, allows operators to easily move or position an HMI to an ergonomic and comfortable working position. Heavy duty and reliable construction. Suspension systems can be assembled in a multitude of configurations that allow for machine mount, wall-mount, top-mount, and floor-mount options. For installation instructions consult our installation manual at [www.saginawcontrol.com](http://www.saginawcontrol.com).

## Construction

- Cast aluminum couplings.
- Extruded aluminum tubes (6060T66).
- Rotating couplings have adjustable tensioner brakes to control movement while in use.
- Rigid, durable bearings in all rotating couplings withstand the stress of continuous use.
- Open or closed tube design.
- Open tube allows for easy access to lay in wiring, with easy to install push fit rubber cover.
- Closed tube acts as conduit for feeding wiring.
- Removable access covers on all couplings with 90 degree turn.
- Hardware and gasket included for installation of coupling to tube.

## Finish

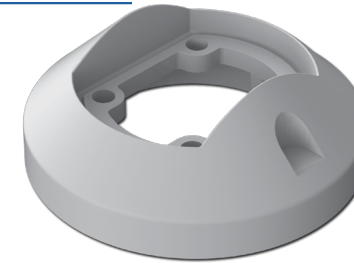
RAL 7035 powder coated finish.

Industry Standards  
NEMA Type 12  
IEC 60529 IP55

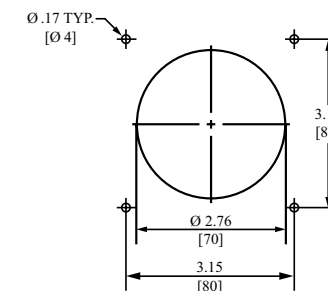


# SUSPENSION SYSTEM TECHNICAL DATA

## SCE-SAFC



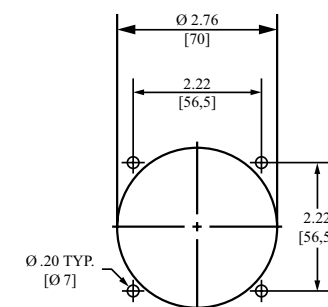
### ENCLOSURE MOUNTING HOLE PATTERN



## SCE-SA360C



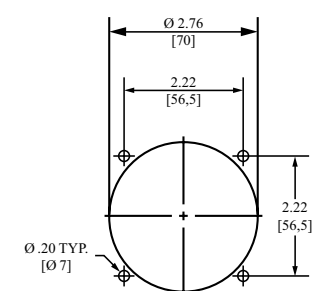
### ENCLOSURE MOUNTING HOLE PATTERN



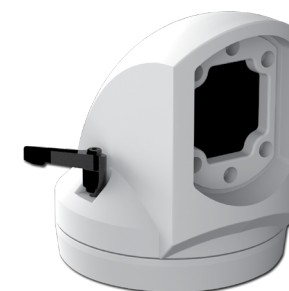
## SCE-SA45IA



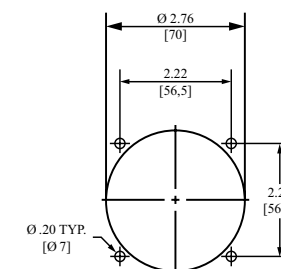
### ENCLOSURE MOUNTING HOLE PATTERN



## SCE-SA320AC



### ENCLOSURE MOUNTING HOLE PATTERN



## SCE-SACB11T21 & SCE-SACB31T55

